

Top 10 Flowers and Birds in Japanese Printed Art

Introduction

The printed art of Japan includes many pictures of flowers and birds. Some species appear more often than others in these flower-and-bird pictures. The ten species of flowers and the ten species of birds chosen most often by artists are shown in this virtual exhibition using twenty woodblock prints selected from the Reader Collection of Japanese Art. The ten flowers are presented first in descending order of popularity, followed by the ten birds in the same descending order. For each of the twenty prints the following information is included: name of the flower or bird, name of the artist, print size and the approximate number of artists who chose the species for depiction.

1 **Plum** (*Prunus mume*) by Kieko Tsurusawa, 150 x 125 mm, chosen by more than 325 artists



2 **Cherry** (*Prunus* sp.) by Tōshi Yoshida, 245 x 185 mm, chosen by more than 190 artists



3 **Common reed** (*Phragmites australis*) by Koson Ohara, 190 x 365 mm, chosen by more than 140 artists



4 **Florist's chrysanthemum** (*Chrysanthemum grandiflorum*) by Gessō Yoshimoto, 125 x 250 mm, chosen by more than 130 artists



5 **Camellia** (*Camellia japonica*) by Kyōzō Yamada, 415 x 295 mm, chosen by more than 120 artists



6 **Tree peony** (*Paeonia suffruticosa*) by Rakusan Tsuchiya, 385 x 255 mm, chosen by more than 105 artists



7 **Japanese wisteria** (*Wisteria floribunda*) by Keinen Imao, 260 x 370 mm, chosen by more than 95 artists



8 **China rose** (*Rosa chinensis*) by Bakufū Ohno, 265 x 385 mm, chosen by more than 90 artists



9 **Sacred lotus** (*Nelumbo nucifera*) by Koson Ohara, 195 x 270 mm, chosen by more than 85 artists



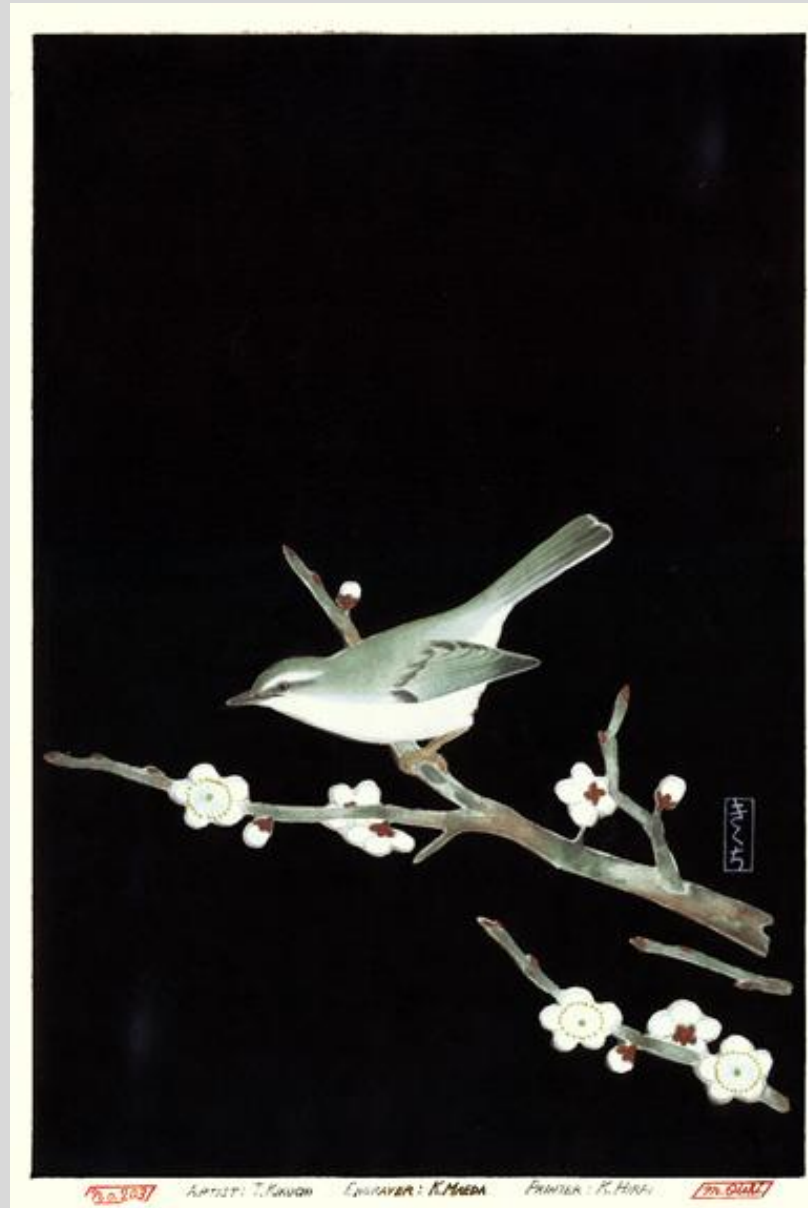
10 **Peach** (*Prunus persica*) by Koson Ohara, 260 x 390 mm, chosen by more than 80 artists



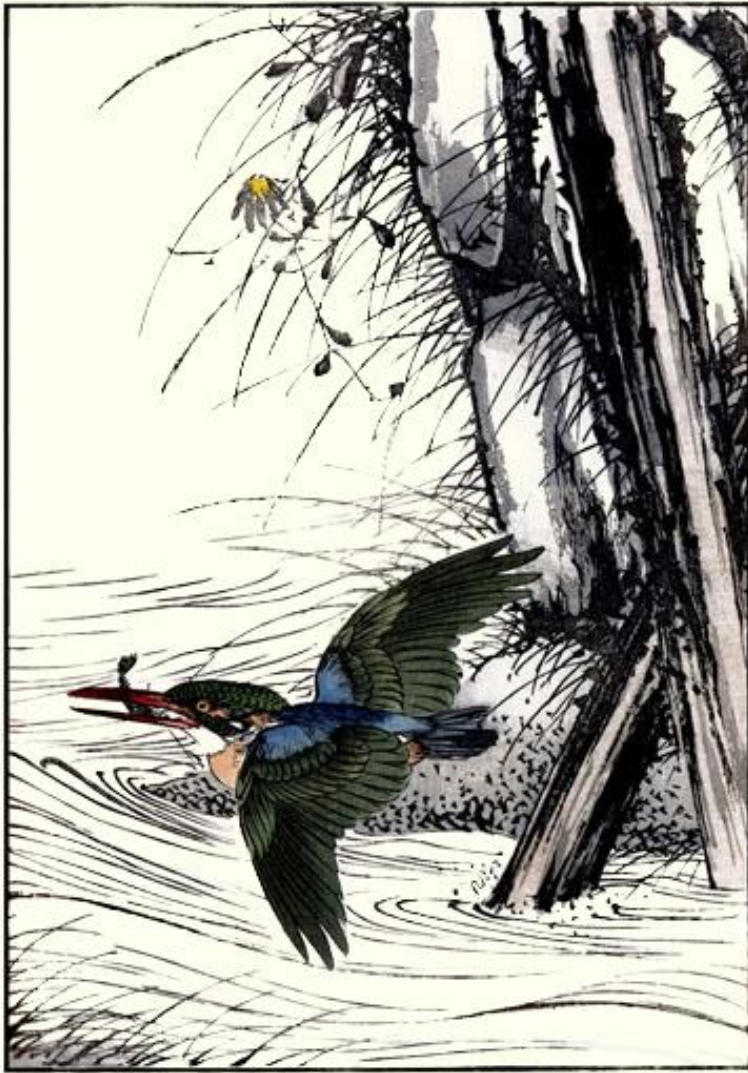
1 **Eurasian tree sparrow** (*Passer montanus*) by Kōitsu Tsuchiya, 195 x 395 mm, chosen by more than 205 artists



2 **Japanese bush-warbler** (*Cettia diphone*) by T. Kikuchi, 265 x 400 mm, chosen by more than 195 artists



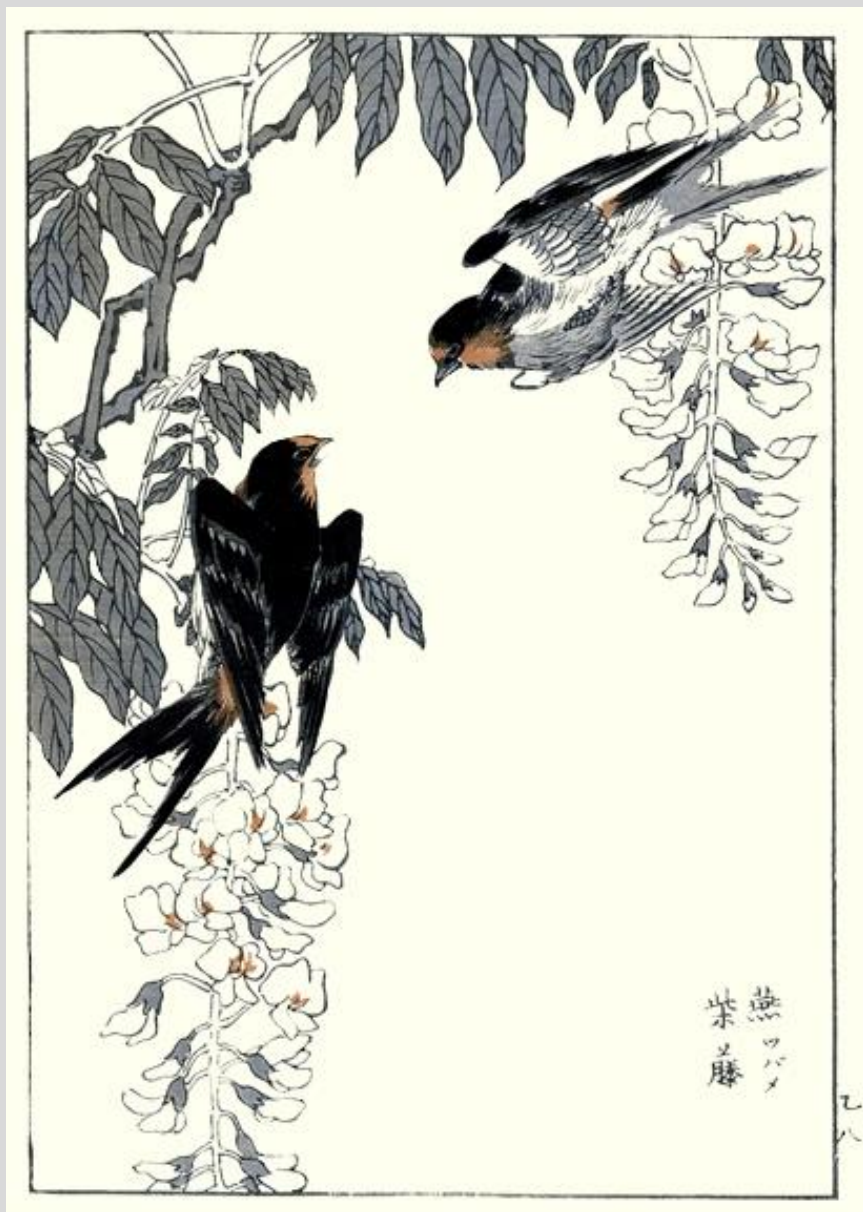
3 **Common kingfisher** (*Alcedo atthis*) by Keinen Imao, 260 x 370 mm, chosen by more than 125 artists



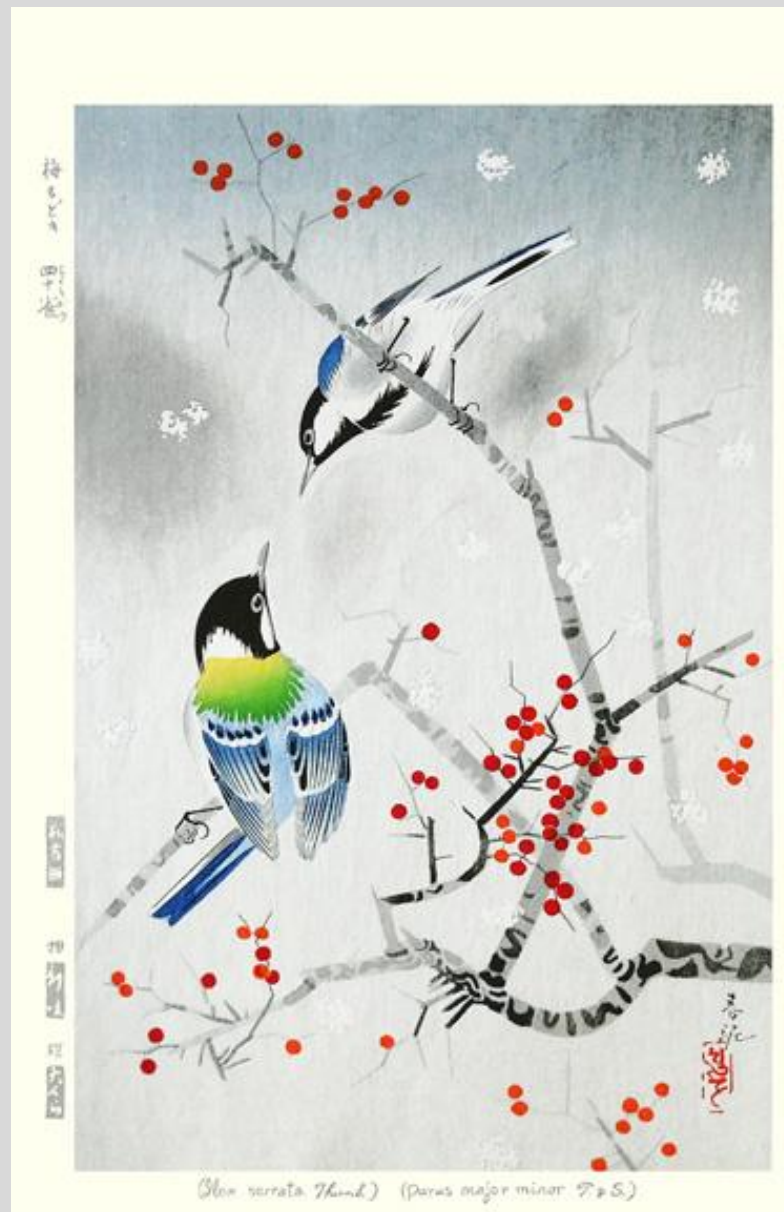
4 **Domestic fowl** (*Gallus gallus*) by Shōun Yamamoto, 90 x 215 mm, chosen by more than 120 artists



5 **Barn swallow** (*Hirundo rustica*) by Bunrei Maekawa, 245 x 355 mm, chosen by more than 110 artists



6 **Great tit** (*Parus major*) by Shundei Nakamura, 270 x 415 mm, chosen by more than 105 artists



7 **Japanese quail** (*Coturnix japonica*) by Shōun Yamamoto, 115 x 240 mm, chosen by more than 105 artists



8 **Little egret** (*Egretta garzetta*) by Koson Ohara, 185 x 365 mm, chosen by more than 100 artists



9 **Japanese white-eye** (*Zosterops japonicus*) by Kiyochika Kobayashi, 335 x 230 mm, chosen by more than 95 artists



10 **Mandarin duck** (*Aix galericulata*) by Rakusan Tsuchiya, 615 x 470 mm, chosen by more than 90 artists



[Back to Exhibitions](#)